



www.mrcollege.ac.uk

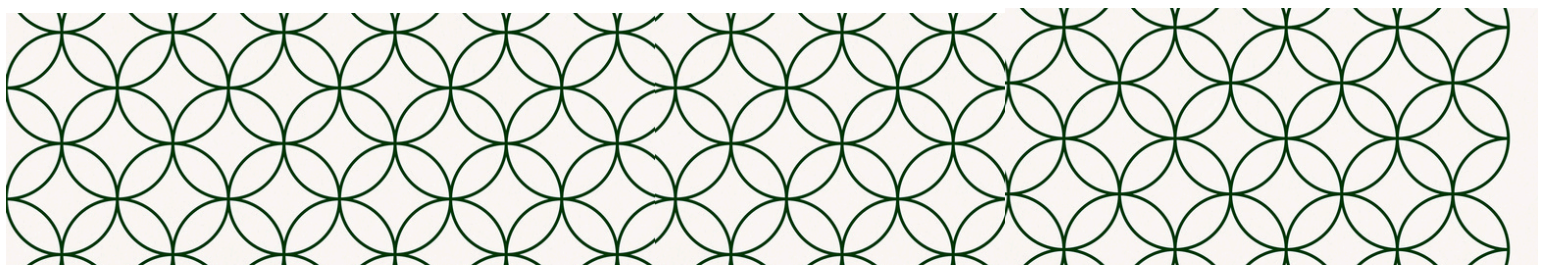
STUDENT FINANCE BOOK

2025/2026



TABLE OF CONTENT

YOUR GUIDE TO STUDENT FINANCE	_____	01
STUDENT FINANCE ELIGIBILITY	_____	02
HARDSHIP FUND & TRAVEL FUND	_____	03
NSS & GO	_____	04
EMPLOYABILITY	_____	05
BUDGETING TIPS FOR STUDENTS	_____	06
SAVE SOME MONEY	_____	07
IMPORTANT CONTACTS	_____	08



What is Student Finance?

Student Finance England provides funding to students in universities and colleges in the UK. Students can access several funding from the Student Loans Company. For example, Tuition Fee loans, Maintenance loans, Childcare grants and many more.



HOW TO APPLY



You can submit Student Finance applications online

<https://www.gov.uk/student-finance-register-login>.

Alternatively, you can apply using the paper application form, which can be found on the Student Finance England website, or you can contact our MRC Student Finance team to apply.

**studentfinance@mrcollege.ac.uk
financequeries@mrcollege.ac.uk**

MAKING SURE YOU ARE ELIGIBLE

Eligibility is key! Check that you are eligible to receive funding for the entire duration of the course you will be studying. You can check by contacting Student Finance England on 0300 1000 607. Alternatively, you can contact our MRC Student Finance team, who will be happy to help. Please contact:

studentfinance@mrcollege.ac.uk
financequeries@mrcollege.ac.uk

Additionally, you can check your eligibility on <https://www.gov.uk/check-what-undergraduate-student-finance-you-can-apply-for-depending-on-your-nationality-and-residency>



HOW TO AVOID DELAYS!

Make sure you apply on time! Check your Student Finance portal and emails regularly for updates on your application. Make sure you are submitting all requested evidence to Student Finance England promptly. The application process typically takes 6–8 weeks. In instances of delays, please contact MRC Student Finance or Student Finance England.



WHAT IS HARDSHIP FUND

Mont Rose College offers MRC Hardship Fund to support students who may be financially struggling, which would impact their study progress.



The fund offers support between £700.00 – £4000.00 in instalments based on eligibility criteria per academic year. You must submit a completed application form with all relevant supporting evidence. Decisions on awards are reached within 30 days.

TRAVEL SUPPORT



Travelling support fund is offered to students facing challenges with transportation to the college. Students will be awarded, subject to the eligibility criteria.

EMERGENCY SUPPORT

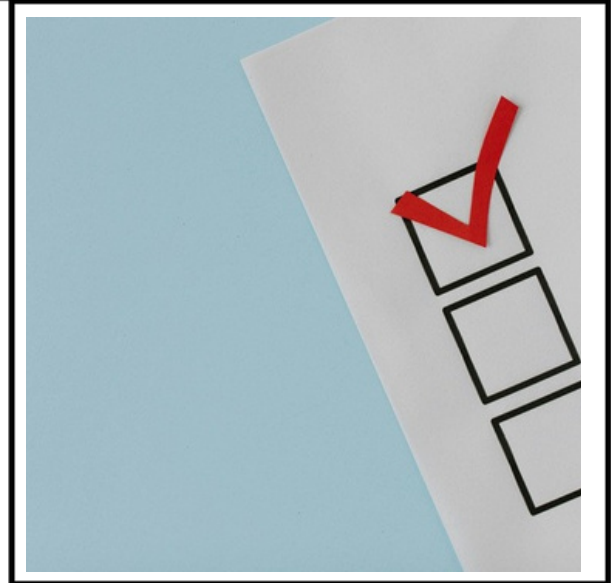
Emergency support fund is available to students with an urgent need for financial support. For more information, please contact Hardship Fund: hardshipfund@mrcollege.ac.uk



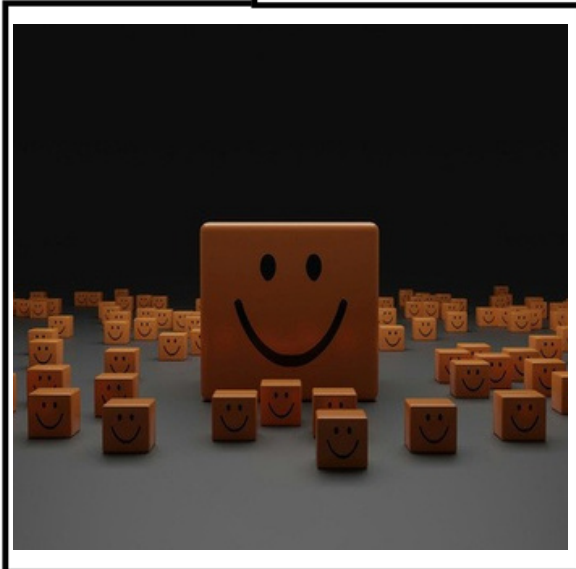
To find out more information, please visit the Hardship Fund page <https://mrcollege.ac.uk/student-financial-support-applications/>

NATIONAL STUDENT SURVEY

Students invest their monies and time in education and expect that this investment will deliver a better life for them. This survey helps prospective students to see if they are investing in the right course and making the right decision. The survey results help see quality standards are met.



GRADUATE OUTCOME

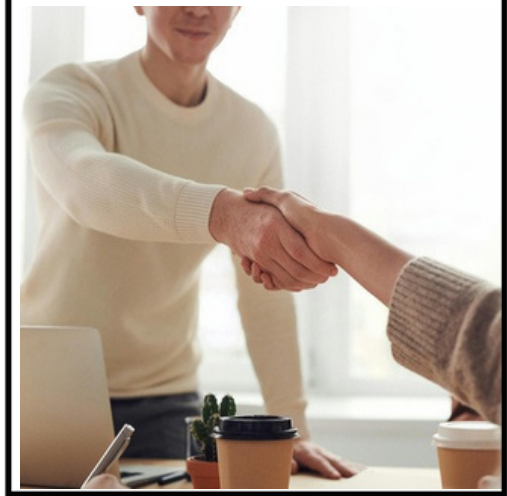


The GO survey collects data for all graduates 15 months following graduation. Its goal is to establish what kind of work, income or further education graduates are engaged in. This captures what success will look like when you graduate. For more information, please

nss@mrcollege.ac.uk

EMPLOYABILITY

The department offers motivational talks and workshops on employability skills to encourage our students to develop further in their fields. We also provide bespoke support towards CV writing, drafting of cover letters, interview skills and job applications. We develop collaborations with companies for the recruitment of our students. Companies are invited to the college for in-house recruitment with the best logistics. This results in our students being offered better job opportunities in their relevant fields. For more information please contact the Employability team.



employment@mrcollege.ac.uk



EARNINGS



Earning is one of the fundamental aspects for students after completion of studies.

The Employability Department at the college actively supports you towards reaching your goals of earning and participates in your success and progression.

BUDGETING TIPS

ESTABLISH YOUR INCOME

Firstly, calculate how much income you are receiving. Make sure to include all sources of income. For example, Maintenance loans, salary, savings etc.



ESTIMATE YOUR EXPENSES



Now you will need to calculate all of your expenditures. Make sure to include how much you are spending. And how much your essential expenditure is? For example, bills, rent, groceries, transport etc.

SET YOUR GOALS

Calculate your total income from Step 1 and minus your expenses from Step 2. Plan how much you want to budget to meet your goals and set up saving strategies.

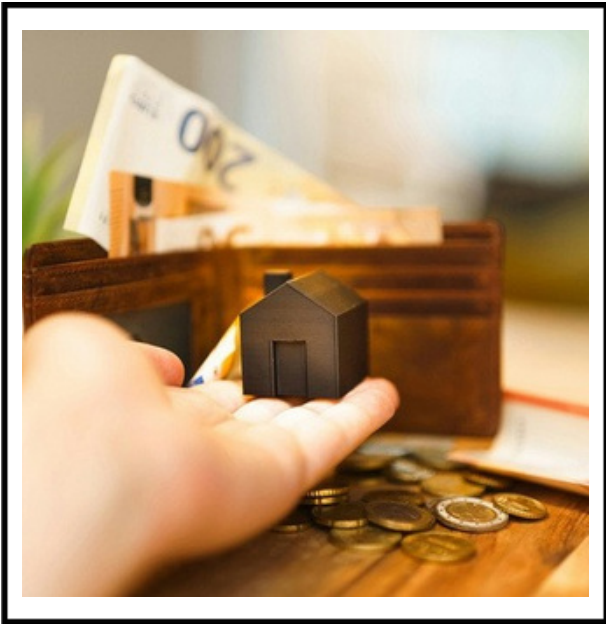


Establish your
income

Estimate your
expenses

Set your
budgeting goal

SAVE SOME MONEY



COUNCIL TAX EXEMPTION

Being a student has many perks. There are some things you don't have to pay for. For example, you can receive discounts on your council tax bills. For more information, please get in touch with our Student Services department.

STUDENT OYSTER CARD

If you're 18 or over, a student and living in a London borough, you can get discounted travel with an Oyster photocard. You can save 30% on adult-rate Travelcards and Bus & Tram Pass season tickets. For more information, please check <https://tfl.gov.uk/fares/free-and-discounted-travel/18-plus-student-oyster-photocard> or contact our Student Services department.



student.assistant@mrcollege.ac.uk



STUDENT FINANCE TEAM

STUDENTFINANCE@MRCOLLEGE.AC.UK
FINANCEQUERIES@MRCOLLEGE.AC.UK



HARDSHIP FUND

HARDSHIPFUND@MRCOLLEGE.AC.UK



EMPLOYABILITY TEAM

EMPLOYMENT@MRCOLLEGE.AC.UK

ADMISSIONS TEAM

ADMISSIONS@MRCOLLEGE.AC.UK





CONTACT DETAILS



0208 5565 009



Info@mrcollege.ac.uk



**Mont Rose House: 412 – 416 Eastern Avenue,
Gants Hill London, IG2 6NQ**

**Shakespeare House: 267 Cranbrook Rd,
Ilford IG1 4TG, United Kingdom**



www.mrcollege.ac.uk